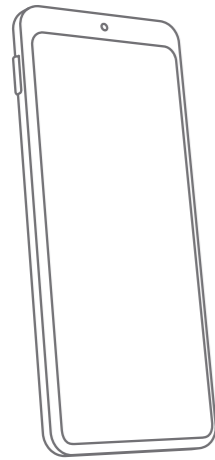
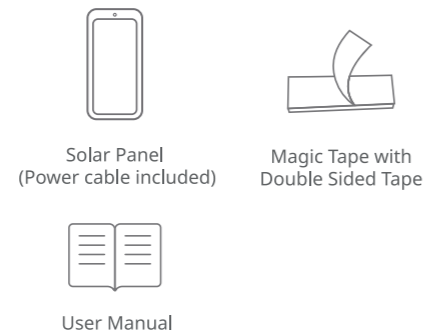


SwitchBot Solar Panel User Manual



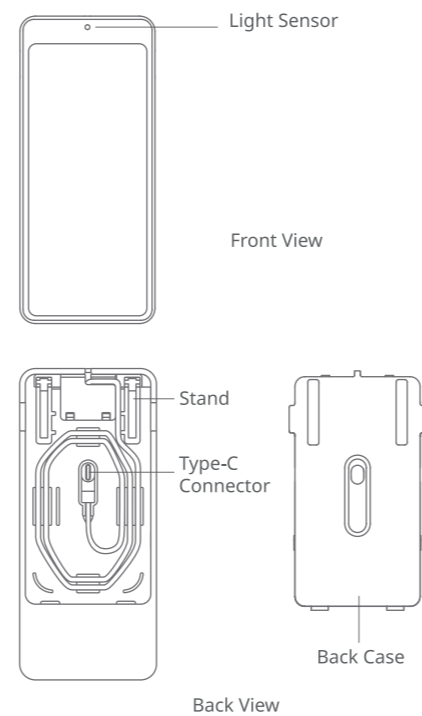
Package Contents



Product Specifications

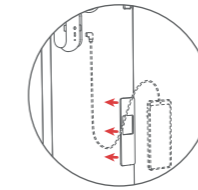
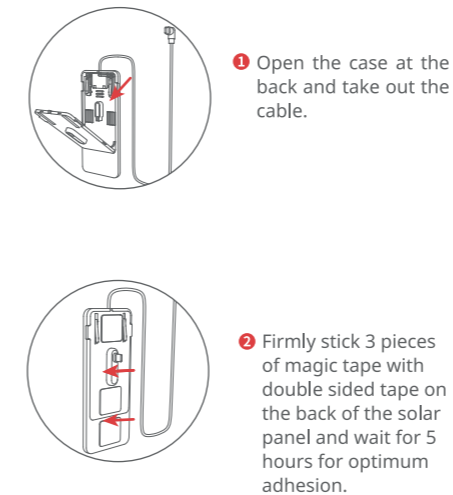
Model Number: W1001000
 Color: White / Black
 Material: ABS plastic with UV-Resistant coating
 Product Size: 72 × 165 × 25 mm (2.83 × 6.49 × 0.98 in)
 Product Net Weight: 100 g (3.53 oz)
 Power Connection: 55 cm USB Type-C cable
 Set-up Requirement: Direct sunlight (without coverage)
 Output: 5 V = 250 mA
 Operating Conditions: -20 °C to 60 °C (-4 °F to 140 °F) / 10 to 90 % RH

Name of Parts

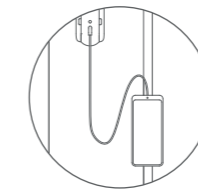


Stick on Your Curtain

If the solar panel cannot receive direct sunlight due to its position, you can use the built-in cable to connect the solar panel and SwitchBot Curtain. You can also use the double sided tape and magic tape to stick it onto the back of your curtain.



3 Put another piece of magic tape with double sided tape onto the back of your curtain, make sure to do the two steps below:
 1. Expose under direct sunlight and 2. Confirm its distance to be less than the length of SwitchBot Curtain's cable, wait for 5 hours to achieve optimum adhesion.



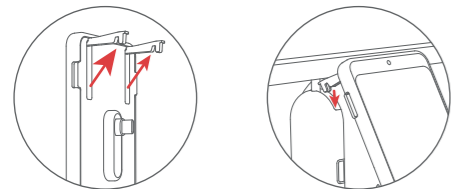
4 Stick the solar panel onto the curtain and connect the cable properly.

www.switch-bot.com

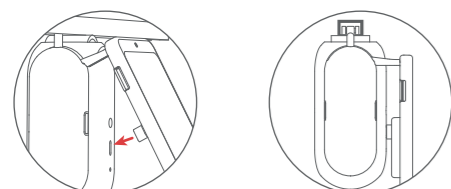
V1.2-2109

Install on SwitchBot Curtain U Rail

Note: Your SwitchBot Curtain should already be installed on your curtain track by now.



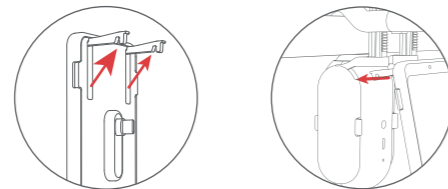
1 Take out the two stands from the case. 2 Insert the stands into the gaps of SwitchBot Curtain's hook, make sure the solar panel is securely hung.



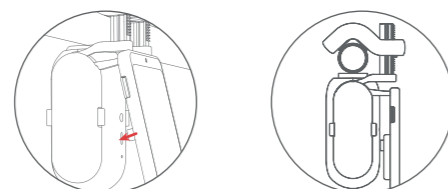
3 Connect the Type-C cable to SwitchBot Curtain. 4 Installation completed.

Install on SwitchBot Curtain (Rod Type)

Note: Your SwitchBot Curtain should already be installed on your curtain track by now.



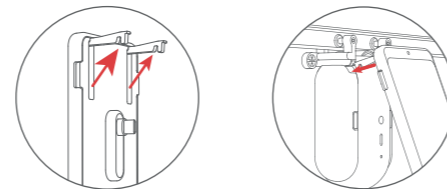
1 Take out the two stands from the case. 2 Insert the stands into the gaps of SwitchBot Curtain's hook, make sure the solar panel is securely hung.



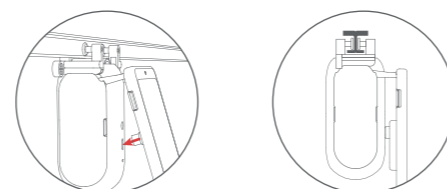
3 Connect the Type-C cable to SwitchBot Curtain. 4 Installation completed.

Install on SwitchBot Curtain (I Rail Type)

Note: Your SwitchBot Curtain should already be installed on your curtain track by now.



1 Take out the two stands from the case. 2 Insert the stands into the gaps of SwitchBot Curtain's hook, make sure the solar panel is securely hung.



3 Connect the Type-C cable to SwitchBot Curtain. 4 Installation completed.

Return and Refund Policy

This product has one-year warranty (start from the purchasing day). The situations below do not fit the Return and Refund Policy:

- Intended damage or abuse.
- Inappropriate storage (drop down or soaking in water).
- Modify or repair of product.
- Natural wearing of product.
- Natural disasters.

Warning: Please avoid dropping or any forms of physical damage to the product.

Contact and Support

If you have any concern or problem when using our products, please kindly send feedback from the Profile > Feedback page in the SwitchBot app.

CE Warning

Manufacturer's Name: Woan Technology (Shenzhen) Co., Ltd.
 Sample Description: SwitchBot Solar Panel
 Trade Mark: SwitchBot
 Model number: W1001000
 Operating Temperature: -20°C~60°C

This product is a fixed location. To comply with RF exposure requirements, a minimum separation distance of 20cm must be maintained between the user's body and the device, including the antenna. Use only the supplied or an approved antenna.

This device in compliance with the essential requirements and other relevant provisions of Directive 2014/53/EU. All essential radio test suites have been carried out.

1. CAUTION: RISK OF EXPLOSION IF BATTERY IS REPLACED BY AN INCORRECT TYPE. DISPOSE OF USED BATTERIES ACCORDING TO THE INSTRUCTIONS.
2. The device complies with RF specifications when the device used at 20cm from your body.

FCC Warning

This device complies with part 15 of the FCC Rules. Operation is subject to the following two conditions: (1) This device may not cause harmful interference, and (2) this device must accept any interference received, including interference that may cause undesired operation. Any Changes or modifications not expressly approved by the party responsible for compliance could void the user's authority to operate the equipment. This equipment has been tested and found to comply with the limits for a Class B digital device, pursuant to part 15 of the FCC Rules.

These limits are designed to provide reasonable protection against harmful interference in a residential installation. This equipment generates uses and can radiate radio frequency energy and, if not installed and used in accordance with the instructions, may cause harmful interference to radio communications. However, there is no guarantee that interference will not occur in a particular installation.

If this equipment does cause harmful interference to radio or television reception, which can be determined by turning the equipment off and on, the user is encouraged to try to correct the interference by one or more of the following measures:

- Reorient or relocate the receiving antenna.
 - Increase the separation between the equipment and receiver.
 - Connect the equipment into an outlet on a circuit different from that to which the receiver is connected.
 - Consult the dealer or an experienced radio/TV technician for help. The device has been evaluated to meet general RF exposure requirement.
- The device can be used in portable exposure condition without restriction.

FCC RF exposure statement:
 The equipment complies with FCC Radiation exposure limit set forth for uncontrolled environment. This equipment should be installed and operated with minimum distance 20cm between the radiator and your body.