



Siren Alarm

User Manual

Thank you for your support!

Please read the user manual carefully before operating.
Please keep the user manual for future reference.



Product Introduction

Siren alarm is an intelligent device that can be controlled remotely by the radio frequency. Siren alarm send messages via Z-Wave network to the Z-Wave main controller. In the Z-Wave network communications, Siren alarm can be connected to any Z-Wave main controller, Different countries or areas, the radio frequency of the Z-Wave network is different. In the communication between the Siren alarm and Z-Wave main controller, the siren alarm will be triggered. The siren alarm is battery powered, small and easily install. When siren alarm is working, LED light will flash, and there will be alarm sound at the same time. The sound is not lower than 100 decibels.

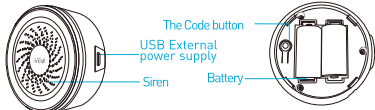
Technical Parameters

- Power supply: CR123A x 2
- External power supply: Mini USB, 6V, 0.5A
- Stand-by time: 1 year
- Radio Frequency: 868.4MHz EU; 908.4MHz US 921.4MHz AU; 869.2MHz RU
- Compatible with 300 series and 500 series
- Easy installation on wall or any surface
- 6 sound can be select
- Range: up to 70m outdoor up to 50m indoor
- Radio Protocol: Z-Wave
- Sound intensity: 100 dB
- Operation temperature: 0~40°C
- Storage temperature: 0~60°C
- Dimension: (D x W x H): 68mm x 68mm x 33mm

Technical Information

- When the siren alarm triggered, it will make alarm sound and LED light flash at the same time.
- When the other sensor is triggered, the siren alarm can associate with the sensor through the Z-Wave network.
- Siren alarm can be controlled remotely via mobile phone App.
- Compatible with any Z-Wave controller.

Product Configuration



Items List

- Siren alarm 1pc
- Battery 2pcs
- Screw 3pcs
- Screw stopper 3pcs
- Double-side adhesive 1pc
- User manual 1pc

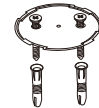
Installation Steps

Hardware Installation

- Cover installation
- Battery installation

Cover installation

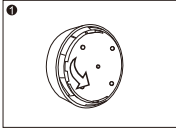
Option One
Fix the siren alarm with Screws



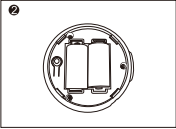
Option Two
Fix the siren alarm with sticker



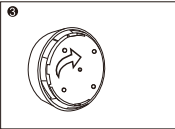
Battery Installation



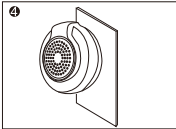
Open the siren alarm



Install the battery



Close the siren alarm



Installation example

Tips

- When install the siren alarm, please avoid the noisy places.
- Please install somewhere easy to find.
- Do not install in a ventilated position to affect the effect of the siren alarm.
- Do not install at a wet place to prevent the siren alarm from damaging.
- When the siren alarms, it would sound and the led would flash red lights.
- Association allows for direct communication between Z-Wave network devices. Main controller does not take part in such communication. Using this mechanism, siren alarm may communicate with other devices even when the main controller is damaged.

Including Sensor (Siren alarm) to Z-Wave Network

- The siren alarm can be included to the Z-Wave network by pressing on the code button.
- Disassemble the siren alarm and insert the battery into the siren alarm. Make sure the device is located within the direct range of the controller.
 - Set the controller into the learning mode (see main controller's operating manual).
 - Quickly, triple click the code button, LED light will flash red for 5 times.
 - Siren alarm will be detected and included in the Z-Wave network.
 - Wait for the main controller to configure the siren alarm.

Excluding Sensor (Siren alarm) from Z-Wave Network

- Make sure the sensor is connected to power source.
- Set the main controller into the learning mode (see main controller's operating manual).
- Quickly, triple click the code button, LED light will flash red for 5 times.
- Wait for the main controller to delete the sensor.

Restore the Sensor (Siren alarm) to Factory Default Settings

- Reset procedure will delete all information on the Z-Wave network or Z-Wave controller, and restore the sensor to factory default settings.
- Remove the sensor's cover.
 - Make sure the sensor is connected to power source.
 - Press the code button for 10 seconds, LED will flash blue for 3

seconds.

4. Release the code button.

NOTE: When the siren alarm is being restored factory settings, please make sure power source is connected.

The status of LED lights

- When the siren alarm is triggered, LED light flashes red for 12 seconds.
- When the siren alarm installs battery, LED light will flash red for 3 seconds.
- Quickly, triple click the code button, add the siren alarm to the Z-Wave network or delete siren alarm from Z-Wave network, LED light flashes red for 5 times.
- Press on the code button for 10 seconds, the siren alarm will be restored to factory default settings, LED light flashes red for 3 seconds.
- In the normal condition, the LED light keeps being off.

Battery Usage Tips

Battery life of the siren alarm is approximately 1 year at factory default settings. The current battery level is displayed in the Z-Wave main controller. Red battery icon means the battery needs replaced.

Note: Siren alarm is battery powered. Using batteries other than specified may result in explosion. Dispose of properly, please observe environmental protection rules.

External power usage hints

External power interface for Mini USB socket, using 6V, 0.5A power is more appropriate, the voltage should not be too large, one side is bad equipment; if the voltage is in 4.5-6V, you can use normally, but will report low power

Associations

This has the effect that when the sensor is triggered, all devices associated with the sensor will receive the relevant reports. Through an association the sensor may control another Z-Wave network device, e.g. the alarm device, wall plug, PIR etc.

This Sensor supports two association groups.

Association group 1 is assigned to the siren alarm status - ON/OFF. Allows for sending controlled command to the associated device whenever the alarm siren is turned ON/OFF. **Association group 2** reports relay's status to just one device, Z-Wave network's main controller by default. It's not recommended to modify settings of this association group.

NOTE: Association allows for direct communication between Z-Wave network devices. Main controller does not take part in such communication.

Advanced Configuration

1. Configure Alarm Music Volume

This parameter defines the output volume when siren plays door bell music. Door Bell music volume is divided into 3 stages, Low (Parameter is set to '1'), Middle (Parameter is set to '2'), High (Parameter is set to '3'). Default value is '2'.

Parameter Number	Size	Available Settings	Default
1	1	1 ~ 3	2

2. Configure Alarm Music Duration Time

This Parameter defines the alarm music duration time when siren receive an alarm sensor notification report or an alarm command from controller. The duration time is divided into 5 stages: Siren is not on (Parameter is set to '0'), 30 second (Parameter is set to '1'), 1 minute (Parameter is set to '2'), 5 minute (Parameter is set to '3'). Default value is '2'.

Parameter Number	Size	Available Settings	Default
2	1	0 ~ 3	2

3. Configuring Door Bell Music Duration Time

This Parameter defines the door bell music duration time when siren receives a door/window sensor notification report command (BASIC_SET=0x02) from controller. The door bell music will be played always if this parameter is set to '255'. The door bell music will not be played if this parameter is set to '0'. Other values are the door bell music playing duration time. Unit: Time.

Parameter Number	Size	Available Settings	Default
3	1	0 ~ 255	1

4. Configure Door Bell Music Volume

This parameter defines the output volume when siren plays alarm music. Door Bell music volume is divided into 3 stages, Low (Parameter is set to '1'), Middle (Parameter is set to '2'), High (Parameter is set to '3'). Default value is '2'.

Parameter Number	Size	Available Settings	Default
4	1	1 ~ 3	2

5. Configure Alarm Music Index

This Parameter defines the alarm music index for siren play different music when alarm occurs. There are 10 different music for user selection.

Parameter Number	Size	Available Settings	Default
5	1	1 ~ 10	9

6. Configure Door Bell Music Index

This parameter defines the door bell music index for siren play different music when alarm occurs. There are 10 different music for user selection.

Parameter Number	Size	Available Settings	Default
6	1	1 ~ 10	10

Battery Check Command

The users can also enquire the battery status of the siren by sending BATTERY_GET command. Once the siren receives the command, it will return BATTERY_REPORT command. The siren will send BATTERY_LEVEL = 0xFF command to the Z-Wave Controller to inform that the siren is in dead battery status, otherwise BATTERY_LEVEL value range is 0% to 100%.

Command Classes

This Sensor supports Command Classes as Below:

- * COMMAND_CLASS_ZWAVEPLUS_INFO (V2)
- * COMMAND_CLASS_VERSION (V2)
- * COMMAND_CLASS_MANUFACTURER_SPECIFIC (V2)
- * COMMAND_CLASS_DEVICE_RESET_LOCALLY (V1)
- * COMMAND_CLASS_POWERLEVEL (V1)
- * COMMAND_CLASS_BATTERY (V1)
- * COMMAND_CLASS_ASSOCIATION (V2)
- * COMMAND_CLASS_ASSOCIATION_GRP_INFO (V1)
- * COMMAND_CLASS_WAKE_UP (V2)
- * COMMAND_CLASS_SWITCH_BINARY (V1)
- * COMMAND_CLASS_NOTIFICATION (V4)
- * COMMAND_CLASS_CONFIGURATION (V1)

Guarantee

- The Guarantee is provided by Shenzhen NEO Electronics Co., Ltd (hereinafter "Manufacture")
- The Manufacturer is responsible for equipment malfunction resulting from physical defects (manufacturing or material) for 12 months from the date of its purchasing.
- During the Guarantee period, the Manufacturer shall repair or replace any defects, free of charge.
- In special cases, when the device cannot be replaced with the device of the same type (e.g. the device is no longer available in the commercial offer), the Manufacturer may replace it with a different device which has similar technical parameters as the faulty one. Such activity shall be considered as fulfilling the obligations of the Manufacturer. The Manufacturer shall not refund money paid for the device.
- The guarantee shall not cover:
 - mechanical damages (cracks, fractures, cuts, abrasions, physical deformations caused by impact, falling or dropping the device or other object, improper use or not observing the operating manual); damages resulting from external causes, e.g.: flood, storm, fire, lightning, natural disasters, earthquakes, war, civil disturbance, force majeure, unforeseen accidents, theft, water damage, liquid leakage, battery spill, weather conditions, sunlight, sand, moisture, high or low temperature, air pollution
 - damages caused by malfunctioning software, attack of a computer virus, or by failure to update the software as recommended by the Manufacturer;

All above is for reference only, please see the subject products.



www.szneo.com

☎ 4007-888-929

SHENZHEN NEO ELECTRONICS CO., LTD

Address: 6TH Floor, Building No.2, Laobing Industrial Park, Tiezhai Road, Xixiang, BaoAn District, Shenzhen, China.
Http: www.szneo.com
Tel: +86 4007 888 929
Fax: +86 755 2966 7746
E-mail: support@szneo.com