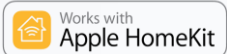


Product Information

Radiator Thermostat II

Smart temperature setting for radiators – for efficient and comfortable living indoors



Radiator Thermostat II

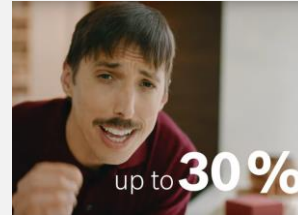
Main use cases & benefits

- ▶ The app provides an overview of the status of the heating in all rooms



+ The entire heating at one sight

- ▶ Customizable time schedules and scenarios as "leaving home"



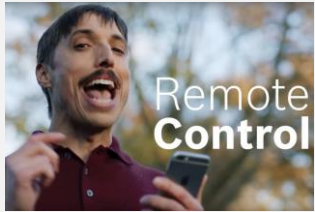
+ Use schedules and scenarios to save energy

- ▶ Heating stops if door window contacts detects open window



+ Smart functions for effortless saving

- ▶ Remote control – control however and wherever you want



+ Keep in control – anytime & anyhow

- ▶ Smart Automations



+ Make your individual routines even smarter, e.g. by combining heating and shading

- ▶ Pause mode



+ Just stop if heating is not needed

Radiator Thermostat II

Product overview

Improved housing design



- Significant **length reduction** to 71 mm
- Symmetric shape 51x51 mm with **improved integration of the battery** compartment
- Display lens avoids dust accumulation
- Overall **design improvement** with soft transitions and silver coating to provide superior finishing touches

Display – Improved readability & care

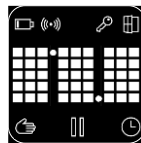


- Physically & visually **enlarged** (size 24x24)
- NEW: Black background for **higher contrast**
- Strong backlight **fades in** when device is operated
- Icons are larger and separated in 2 rows with **operation modes and device status information**
- **Digits with dot matrix** instead of 7-segment setup give more flexibility for display indications

Reversible display

New

- Fits for all countries (horizontal & vertical orientation)
- Icon design adapted to be **readable upside down**
- Dot matrix area and additional comma digits allow to **flip the temperature indication**



RRP incl. VAT 81,29 EUR
Launch: 08/2022



Connection ring

- **High-quality look & feel** due to real metal ring

Unmissable light signals

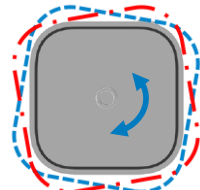
New

- Circumferential **light ring** is clearly visible from any viewing angle
- **Multi-color LEDs** allow better adaption of system colors and further use case expansion using **new color codes**
- Unmistakable **feedback** when setting temperatures with **red & blue light indication**
- More color codes for other use cases

Intuitive operation

New

- **Rotating rocker** replaces wobbly buttons
- Palpable symbols further support **intuitive operation** concept by turning and pressing the rocker
- **Tilt left or right** to set temperatures (tilt limited to 3,5°)
- Hold in tilted position until required temperature is set (instead of clicking several times)
- Press the rocker for device settings
- **Child lock** can be set on device



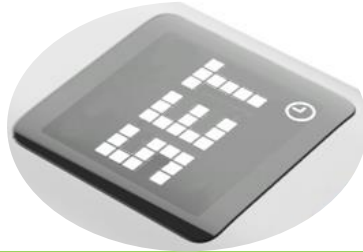
Radiator Thermostat II

On device operation

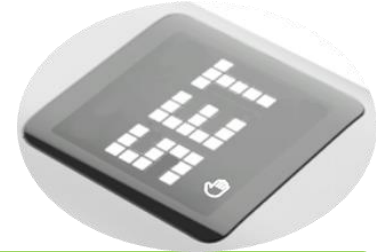
Press "O"
(1 second)



Menu
opens



Turn to select.
Press "O" to
confirm



Set room control mode: manual or automatic

Press "O"
(3 seconds)



Menu
opens



Turn to select.
Press "O" to
confirm



Set child lock: on & off

Press "O"
(1 second)



Turn to select.
Press "O" to
confirm



End heating pause mode

Radiator thermostat II

Technical Data

Radiator thermostat II

BTH-RA



| | |
|--------------------------------------|--|
| Device type name (related to sensor) | BTH-RA |
| Protection class | IP20 |
| Ambient temperature | 0 - 50 °C |
| Max. humidity | 5 - 80% |
| Dimensions (W × H × D) | 51 x 51 x 87 mm (76mm without connection ring) |
| Weight (without batteries) * | 135 g |
| Radio frequency | 2,4 – 2,4835 GHz |
| Radio protocol | ZigBee 3.0 |
| Max. transmission power | 10 mW |
| Radio range in free-field conditions | < 50 m |
| Software class | A |
| Receiver category | 2 |
| Batteries | 2 x LR6/Mignon/AA |
| Battery life | < 2 years |
| Thread dimensions (radiator valve) | M30 x 1,5 mm |
| Max. current draw | 220 mA |