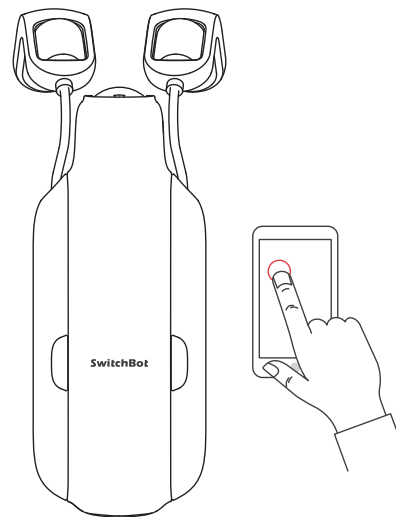
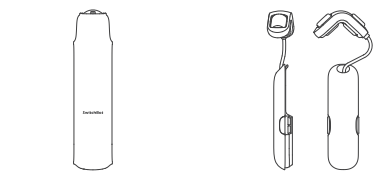


SwitchBot Curtain Rod 3 User Manual



※ Please read this user manual carefully before using the device.

Package Contents



Main Unit Hook Pair (Rod 3)



Type-C Cable Clip

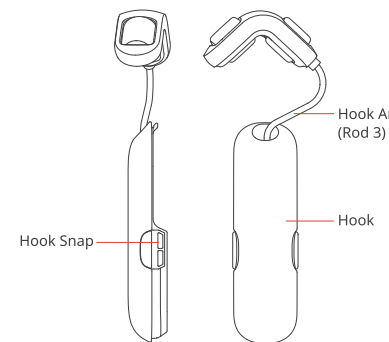


Reset Tool Wet Wipe

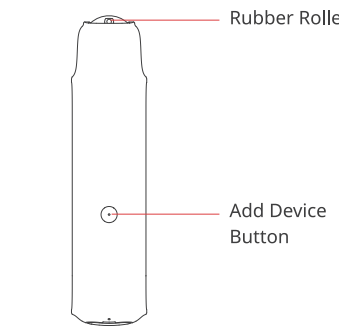


Beads Fixer (beads installed) Magnet Attachment (for positioning)

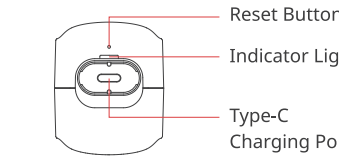
List of Components



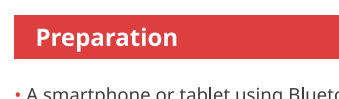
Hook Arm (Rod 3) Hook



Rubber Roller Add Device Button



Reset Button Indicator Light



Type-C Charging Port

Preparation

- A smartphone or tablet using Bluetooth 4.2 or later.
- The latest version of our app, downloadable via the Apple App Store or Google Play Store.
- A SwitchBot account, you can register via our app or sign in to your account directly if you already have one.
- A fully charged SwitchBot Curtain.

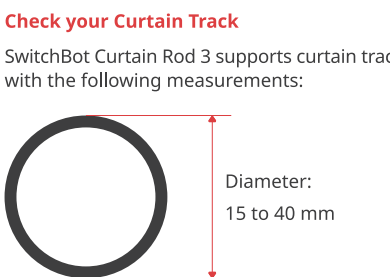
Please note: If you intend to use Cloud Services for voice control, you will need a SwitchBot Hub (sold separately).



iOS 11.0+



Android OS 5.0+



Check your Curtain Track
SwitchBot Curtain Rod 3 supports curtain track with the following measurements:
Diameter: 15 to 40 mm

If SwitchBot Curtain Rod 3 does not fit your curtain track, please contact our customer support at support@switch-bot.com

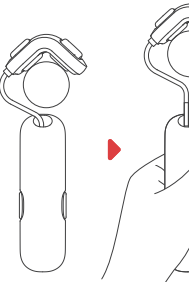
Installation

Step 1: Add your SwitchBot Curtain Rod 3 to our app

Open our app and sign in to your account. Tap "+" at the top right-hand corner of the home page, find the Curtain icon, and select. Then follow the instructions to add your SwitchBot Curtain Rod 3.

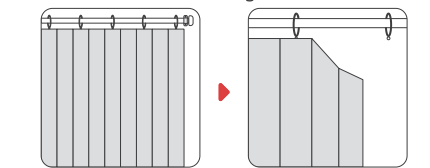
Step 2: Install SwitchBot Curtain Rod 3 onto your curtain track

Stretchable Hook Arm

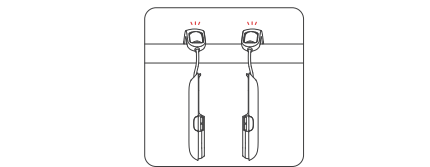


1. Ring Top Curtains

- 1 Fully close your curtain and remove the first curtain hook from the ring.

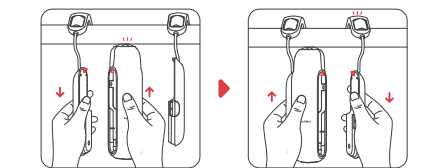


- 2 Install two detachable Hooks one by one onto your curtain rod between the first and the second ring.



- 3 Pull one detachable Hook downwards with one hand, and hold the Main Unit (with the SwitchBot logo on it facing indoors) upwards against the rod with another hand. Align the snaps and attach the Main Unit to the Hook. You will hear a clicking sound when firmly attached. Then attach another Hook to the Main Unit.

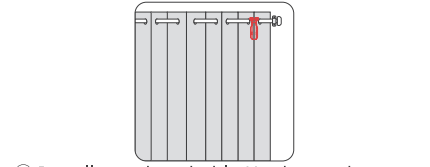
Please note: do not apply excessive force when pulling the Hook downwards without supporting your rod, or your rod may break or detach from your wall.



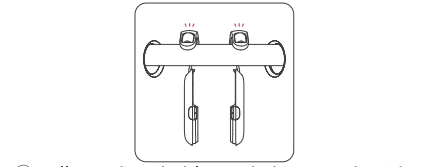
- 4 Adjust your SwitchBot Curtain Rod 3 to keep it perpendicular to the ground. Hang your curtain back in place and hide SwitchBot Curtain Rod 3 behind your curtain fabric.

2. Grommet Curtains

- 1 Install your SwitchBot Curtain Rod 3 at the back of this type of curtain.

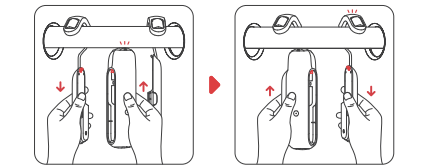


- 2 Install two detachable Hooks one by one onto your curtain rod between the first and the second ring.

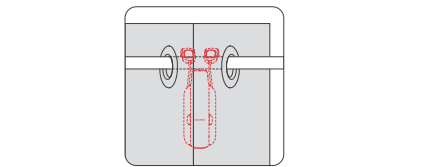


- 3 Pull one detachable Hook downwards with one hand, and hold the Main Unit (with the SwitchBot logo on it facing indoors) upwards against the rod with another hand. Align the snaps and attach the Main Unit to the Hook. You will hear a clicking sound when firmly attached. Then attach another Hook to the Main Unit.

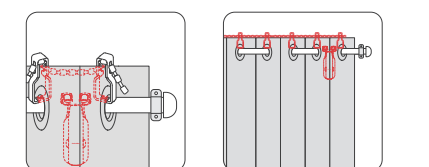
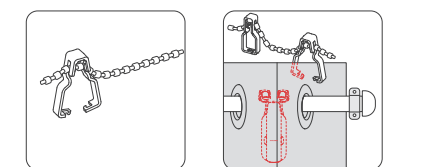
Please note: do not apply excessive force when pulling the Hook downwards without supporting your rod, or your rod may break or detach from your wall.



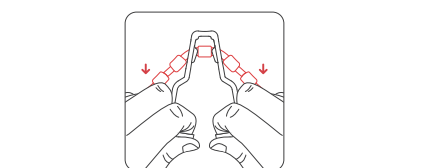
- 4 Adjust your SwitchBot Curtain Rod 3 to keep it perpendicular to the ground.



- 5 Refer to the pictures below to install the beads fixer (with beads installed) at the top of the grommets. Make sure that you clip them to the grommets firmly. Finish by cutting the remaining beads or put it behind your curtains.

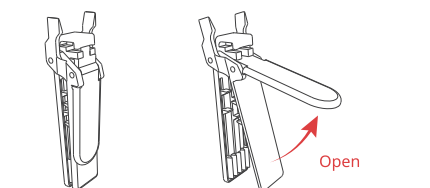


If the distance between the clips does not fit your curtains, you can adjust them as shown below.

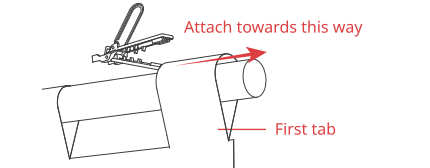


3. Tab Top Curtains

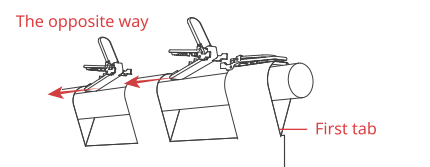
Use the clips provided to help install your SwitchBot Curtain Rod 3 on tab top curtains.



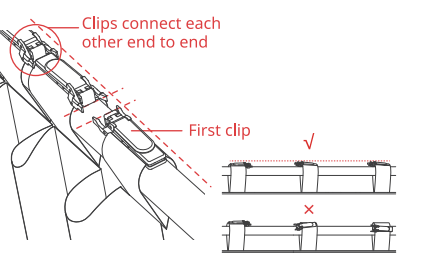
Close your curtain, attach a clip on the first tab.



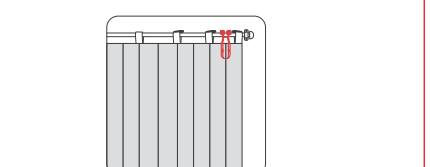
Attach the remaining clips on other tabs as shown in the picture.



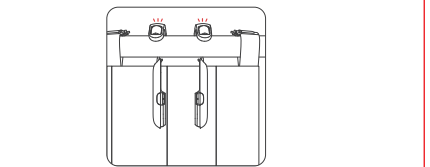
Beware that all other clips should be attached the opposite way against the first clip, make sure all the clips are sitting on the top of the rod and are aligned with each other.



- 1 Install your SwitchBot Curtain Rod 3 at the back of this type of curtain.

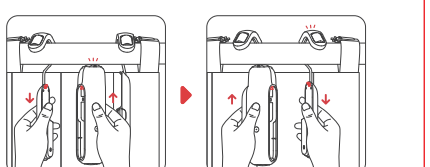


- 2 Install two detachable Hooks one by one onto your curtain rod between the first and the second ring.

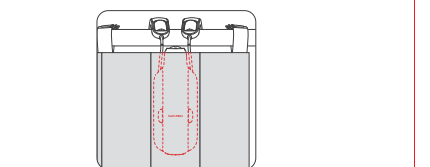


- 3 Pull one detachable Hook downwards with one hand, and hold the Main Unit (with the SwitchBot logo on it facing indoors) upwards against the rod with another hand. Align the snaps and attach the Main Unit to the Hook. You will hear a clicking sound when firmly attached. Then attach another Hook to the Main Unit.

Please note: do not apply excessive force when pulling the Hook downwards without supporting your rod, or your rod may break or detach from your wall.

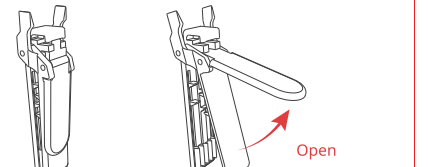


- 4 Adjust your SwitchBot Curtain Rod 3 to keep it perpendicular to the ground.

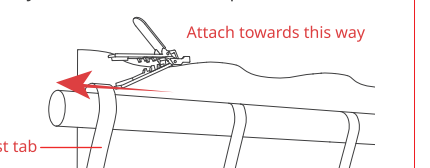


4. Back Tab Curtains

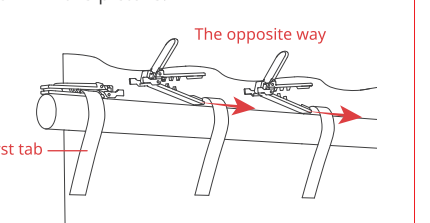
Use the clips provided to help install your SwitchBot Curtain Rod 3 on back tab curtains.



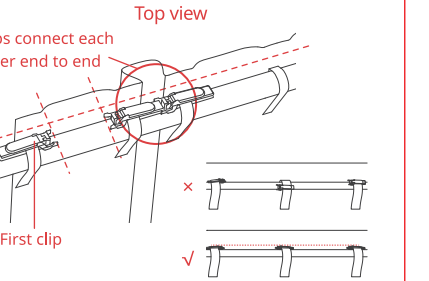
Close your curtain, attach a clip on the first tab.



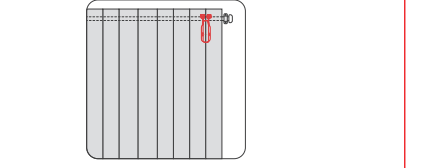
Attach the remaining clips on other tabs as shown in the picture.



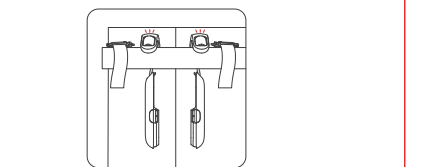
Beware that all other clips should be attached the opposite way against the first clip, make sure all the clips are sitting on the top of the rod and are aligned with each other.



- 1 Install your SwitchBot Curtain at the back of this type of curtain.

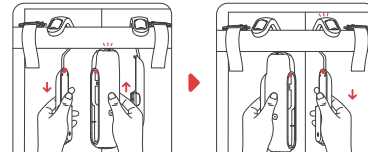


- 2 Install two detachable Hooks one by one onto your curtain rod between the first and the second ring.

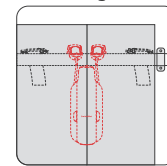


③ Pull one detachable Hook downwards with one hand, and hold the Main Unit (with the SwitchBot logo on it facing indoors) upwards against the rod with another hand. Align the snaps and attach the Main Unit to the Hook. You will hear a clicking sound when firmly attached. Then attach another Hook to the Main Unit.

Please note: do not apply excessive force when pulling the Hook downwards without supporting your rod, or your rod may break or detach from your wall.



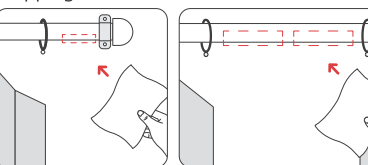
④ Adjust your SwitchBot Curtain Rod 3 to keep it perpendicular to the ground.



Step 3: Install Magnet Attachment

The magnet attachment will help your SwitchBot Curtain run precisely to close your curtains in future operation. Follow the steps below to install the magnet attachment before route calibration.

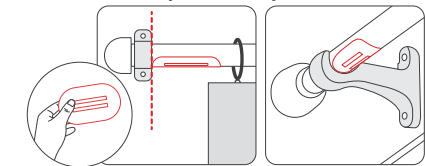
To ensure the magnet attachment firmly attaches to your track surface, please use the wet wipe provided to clean the surface first. Dirt or dust will affect adhesion and may cause dropping at a later time.



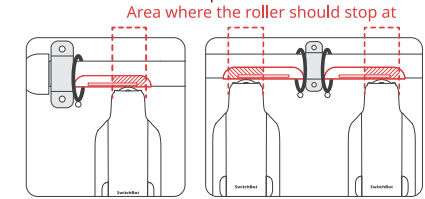
Situation 1: A rod bracket is holding the rod at the closed position.

① Remove the magnet attachment from the liner. Stick it to the bottom of the rod along the bracket, with the magnet piece inside parallel with the rod.

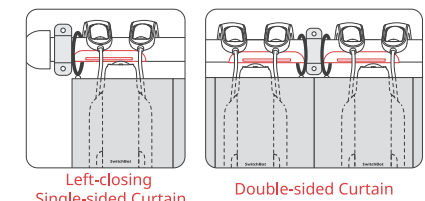
If you use double-sided curtains, stick two magnet attachments along both sides of the middle bracket symmetrically.



② Pull your SwitchBot Curtain, make it roll onto the magnet attachment and stop within the area as shown in the picture.



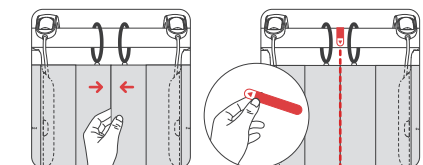
③ Hide your SwitchBot Curtain behind your fabric curtain to finish.



Situation 2: Double-sided curtains without a bracket in the middle.

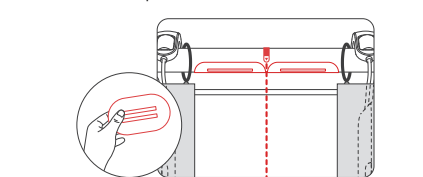
① Fully close your curtains. Use the red long sticker to mark the middle position.

Please note: only using your eyes to measure the position may cause deviation. Please be sure to use the provided sticker.

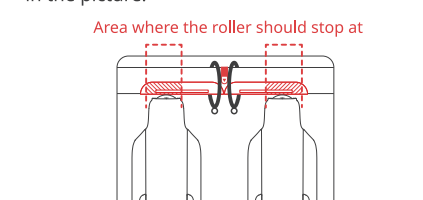


② Open your curtains. Peel off the tape liners of your magnet attachments, and stick them along both sides of the dotted line symmetrically. Please note:

- Two magnet attachments need to be close to each other, wrapping the rod at the bottom.
- The magnet pieces inside the attachments need to be parallel with the rod.



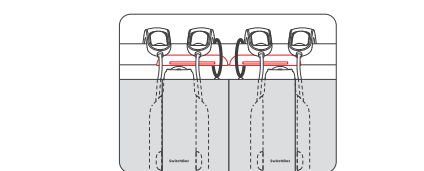
③ Pull your two SwitchBot Curtain devices separately, make them roll onto the magnet attachment and stop within the area as shown in the picture.



④ Remove the red sticker. Hide your SwitchBot Curtain behind your fabric curtains to finish.



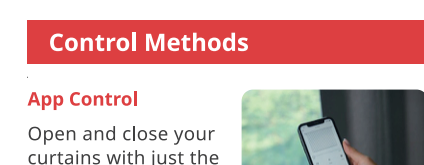
Please note: you can turn this feature off in the Advanced Settings page of your device at any time.



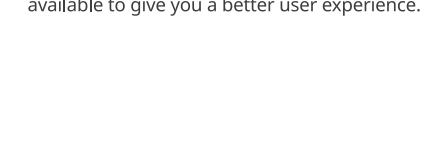
Step 4: Calibration

After you have added and installed SwitchBot Curtain Rod 3, you will need to calibrate your device to set its route on your curtain track. Please follow the instructions in our app to make sure that the actual movement of your curtain is the same as the animation in the app. You can choose to recalibrate your device or change its opening direction whenever you want by navigating to Curtain > Settings > Calibration.

Please note: You can group two SwitchBot Curtain Rod 3 units together should you plan to open your curtains from the middle. Before you calibrate, please make sure the positions of both devices are the same as shown in our app.



Open and close your curtains with just the tap of a button. We offer intuitive app control for iOS and Android users, with weekly/bi-weekly updates. OTA firmware updates are also available to give you a better user experience.



Touch & Go

When SwitchBot Curtain Rod 3 senses you drawing your curtain (more than 5 cm in distance), your device will automatically open or close depending on where your device is. For double-sided curtains, you only need to pull one side to activate.

Please note: *5cm lowers the possibility of false triggers by foreign objects, pets, children, etc.

Home Automation Using Voice Commands*

You can link multiple third-party smart assistants to your SwitchBot account to control your SwitchBot Curtain Rod 3 or trigger Scenes using voice commands.

How to realize voice control and home automation:

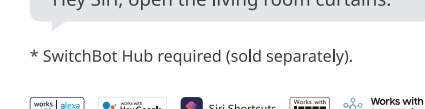
- Connect your smartphone or tablet to the Internet.
- Set up a SwitchBot Hub (sold separately).
- Turn on Cloud Services via SwitchBot Curtain's Settings page.
- Link third-party services to your SwitchBot account.

Alexa, close the curtains.

Hey Google, close my bedroom curtains.

Hey Siri, open the living room curtains.

* SwitchBot Hub required (sold separately).



Using Your Device with SwitchBot Remote



A wireless remote to place anywhere.

You can also control your SwitchBot Curtain using SwitchBot Remote (sold separately) with two buttons located on the remote that can be set as an action via our app. One Remote can also control 2 SwitchBot Curtain devices that have been grouped. Please refer to the user manual of Remote for more information.

Device Settings

Light Sensor (Solar Panel)

By connecting your SwitchBot Curtain Rod 3 to the SwitchBot Solar Panel 3 (sold separately), you can set up automations based on the light level data. The light level curve will tell you the optimal time period of sunlight in a day and you can set the automatic charging schedule accordingly for your SwitchBot Curtain Rod 3.

Delay

You can set a delay for a countdown action including countdown time, percentage of opening or closing, and Motion mode.

Schedules

You can set up to 5 Schedules locally on your device, or unlimited Schedules when used with a SwitchBot Hub. You are able to set the day, time, percentage of opening or closing, and Motion mode.

Charging, Firmware Upgrades, and Resetting Factory Settings

Charging

It takes about 6.5 hours to fully charge your device battery and this can last for up to 8 months after one full charge. You may also purchase SwitchBot Solar Panel to charge using sunlight.

- A 5V=1A adapter is required to charge your device.
- Battery life is tested by opening and closing 8 kg (17 lbs) curtains on a 3-meter-long track once a day under temperature conditions of 25 °C. Actual battery life may vary depending on different conditions.
- With only 3 hours per day exposed under sunlight that can cast clear shadow, SwitchBot Solar Panel can generate sufficient power to sustain your SwitchBot Curtain Rod 3 forever. The upgraded Solar Panel greatly improved efficiency even under weak sunlight. As long as your window can receive sunlight, we recommend purchasing our Solar Panel to charge your device. This way, you can ensure that your SwitchBot Curtain Rod 3 remains powered and ready to use whenever you need it.

Firmware Upgrades

In order to improve user experience, we will regularly release firmware updates to introduce new functions and solve any software defects that may occur during usage. When a new firmware version is available, we will send an upgrade notification to your account via our app. When upgrading, please make sure your product has sufficient battery and make sure your smartphone is within range to prevent interference.

Resetting Factory Settings



Use the reset tool provided to press and hold the Reset button for 3 seconds until the indicator light is visible and then release.

Specifications

Model: W2400000
Color: White
Material: ABS + PC (Anti-UV, fire-resistance rating V-0)
Size (Main Unit): 42 × 51 × 173 mm (1.7 × 2 × 6.8 in.)
Weight (Main Unit): 280 g (9.9 oz.)
Power: Type-C, DC 5V = 1A, 3350 mAh lithium-ion battery or by Solar Panel!
Battery Life: 8 months² or unlimited with Solar Panel
Network Connectivity: Bluetooth 5.0, long range transmission
Strength: Supports curtain of up to 15 kg (33 lbs) (from controlled experiments in our lab)
Max Runway: 3 m (9.8 ft.)
Schedule: Up to 5, or unlimited with a SwitchBot Hub³
Voice Control (SwitchBot Hub Required): Amazon Alexa, Google Assistant, Siri Shortcuts, SmartThings, IFTTT

Please note: we recommend using your device in room temperature conditions only.

- SwitchBot Solar Panel is sold separately.
- Battery life tested under conditions of opening and closing a 8 kg (17 lbs) curtain on a 3-meter-long track once a day at a temperature of 25 °C. Actual battery life may vary.
- SwitchBot Hub sold separately.

Warranty

We warrant to the original owner of the product that the product will be free from defects in materials and workmanship. Please note that this limited warranty does not cover:

- Products submitted beyond the original limited warranty period.
- Products on which repairs or modifying have been attempted.
- Products subjected to falls, extreme temperatures, water, or other operating conditions outside the product specifications.
- Damage due to natural disaster (including but not limited to lightning, flood, tornado, earthquake, or hurricane, etc.).
- Damage due to misuse, abuse, negligence or casualty (e.g. fire).
- Other damage that is not attributable to defects in the manufacture of product materials.
- Products purchased from unauthorized resellers.
- Consumable parts (including but not limited to batteries).
- Natural wear of the product.

Contact & Support

Setup and Troubleshooting: support.switch-bot.com

Support Email: support@switch-bot.com

Feedback: If you have any concerns or problems when using our products, please send feedback via our app through the Profile > Help & Feedback page.

FCC Warning

This device complies with Part 15 of the FCC Rules. Operation is subject to the following two conditions:
 (1) This device may not cause harmful interference.

Find Out More

Please visit support.switch-bot.com for more details.



CE/UKCA Warning

To comply with RF exposure requirements, a minimum separation distance of 20 cm must be maintained between the user's body and the device, including the antenna. Use only the supplied or an approved antenna. This device is in compliance with the essential requirements and other relevant provisions of directive 2014/53/EU. All essential radio test suites have been carried out.

CE DOC
 Hereby, Woan Technology (Shenzhen) Co., Ltd. declares that the radio equipment type W2400000 is in compliance with Directive 2014/53/EU. The full text of the EU declaration of conformity is available at the following internet address: support.switch-bot.com

UKCA DOC
 Hereby, Woan Technology (Shenzhen) Co., Ltd. declares that the radio equipment type W0701600 is in compliance with UK Radio Equipment Regulations (SI 2017/1206). The full text of the UK declaration of conformity is available at the following internet address: support.switch-bot.com

This product can be used in EU member states and UK.
 Manufacturer: Woan Technology (Shenzhen) Co., Ltd.
 Address: Room 1101, Qiancheng Commercial Center, No. 5 Haicheng Road, Mabu Community, Xixiang Subdistrict, Bao'an District, Shenzhen, Guangdong, P.R.China, 518100

Operation Frequency: Max RF output power Bluetooth: 2402 MHz to 2480 MHz (-1.42 dBm)

FCC Warning

This device complies with Part 15 of the FCC Rules. Operation is subject to the following two conditions:
 (1) This device may not cause harmful interference.

(2) This device must accept any interference received, including interference that may cause undesired operation.

NOTE: This equipment has been tested and found to comply with the limits for a Class B digital device, pursuant to Part 15 of the FCC Rules. These limits are designed to provide reasonable protection against harmful interference in a residential installation. This equipment generates uses and can radiate radio frequency energy and, if not installed and used in accordance with the instructions, may cause harmful interference to radio communications. However, there is no guarantee that interference will not occur in a particular installation. If this equipment does cause harmful interference to radio or television reception, which can be determined by turning the equipment off and on, the user is encouraged to try to correct the interference by one or more of the following measures:
 - Reorient or relocate the receiving antenna.
 - Increase the separation between the equipment and receiver.
 - Connect the equipment into an outlet on a circuit different from that to which the receiver is connected.
 - Consult the dealer or an experienced radio/TV technician for help.

NOTE: The manufacturer is not responsible for any radio or TV interference caused by unauthorized modifications to this equipment. Such modifications could void the user's authority to operate the equipment.

FCC Radiation Exposure Statement
 This equipment complies with FCC radiation exposure limits set forth for an uncontrolled environment. This equipment should be installed and operated with minimum distance 20 cm between the radiator and your body.

IC Warning

This device complies with CAN ICES-003 (B)/NMB-003(B). This device complies with Industry Canada Licence-exempt RSS standard(s). Operation is subject to the following two conditions:
 (1) this device may not cause harmful interference.
 (2) this device must accept any interference received, including interference that may cause undesired operation.

Cet appareil est conforme à la norme CAN ICES-3 (B)/NMB-3 (B).

Le présent appareil est conforme aux CNR d'Industrie Canada applicables aux appareils radio exempts de licence. L'exploitation est autorisée aux deux conditions suivantes :

(1) l'appareil ne doit pas produire de brouillage.
 (2) l'utilisateur de l'appareil doit accepter tout brouillage radioélectrique subi, même si le brouillage est susceptible d'en compromettre le fonctionnement.

IC Radiation Exposure Statement
 This equipment complies with the IC radiation exposure limits established for uncontrolled environment. This equipment must be installed and operated at least 20 cm from a radiator or your body.
 Cet équipement est conforme aux limites d'exposition aux rayonnements de la IC établies pour un environnement non contrôlé. Cet équipement doit être installé et fonctionner à au moins 20cm de distance d'un radiateur ou de votre corps.

KCC Warning

인종반은자의 상호: Woan Technology (Shenzhen) Co., Ltd.
 제품명/모델명: 특정소출력 무선기기(무선데이터통신시스템용 무선기기) / W2400000
 제조자 및 제조국가: Woan Technology (Shenzhen) Co., Ltd. / China
 제조년월: 2023.07
 인증번호: R-R-Woa-W2400000
 이 장치는 보안성이 없으므로 통신보안에 위배되는 사항의 통신을 금지하며 운용 중

NCC Warning

取得審證證明之低功率射頻器材，非經核准，公司、商號或使用均不得擅自變更頻率，加大功率或變更原設計之特性及功能。
 低功率射頻器材之使用不得影響飛航安全及干擾合法通信；經發現有干擾現象時，應立即停用，並改善至無干擾時方得繼續使用。
 前述合法通信，指依電信管理法規作業之無線電通信。低功率射頻器材須忍受合法通信或工業、科學及醫療用電波輻射性電機設備之干擾。