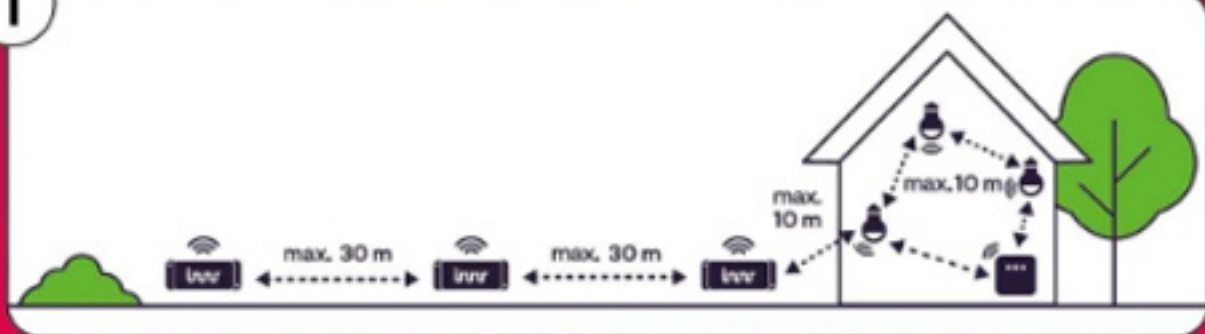
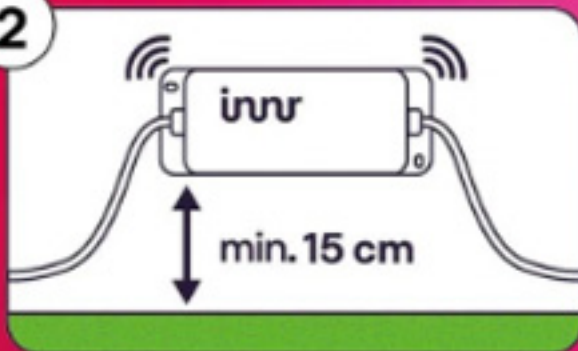


Enhance the range of your Outdoor Lighting

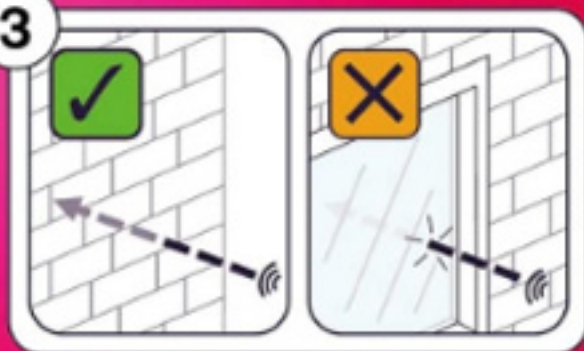
1



2



3



1 Place the Outdoor control box in the best possible range of the bridge or an indoor Zigbee smart light / plug. Make sure it is not behind any metal objects.

2 Connect the control box where you will place it. Switch on the nearest indoor smart light / plug for it to serve as a 'Zigbee signal repeater'. Make sure the control box is at least 15 cm from the ground.

3 Insulating windows (low E-glass) can disrupt the signal. Make sure that the signal goes through stone or wooden walls.