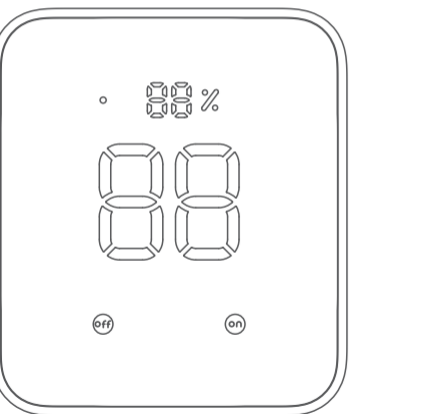
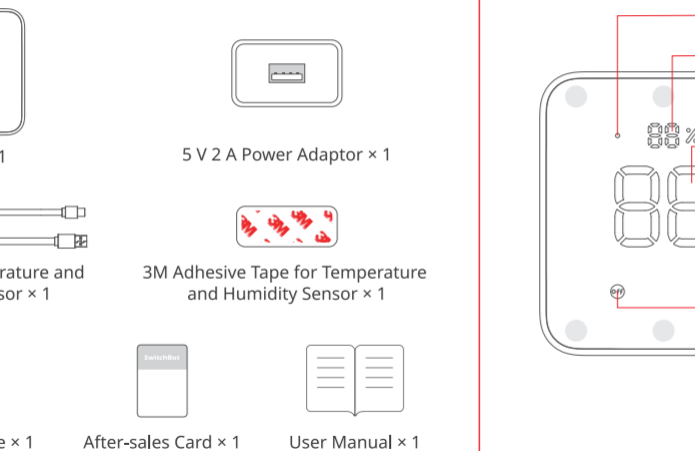


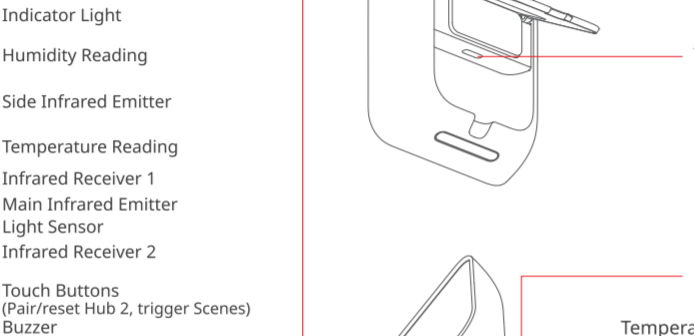
SwitchBot Hub 2 User Manual



Package Contents



List of Components



Type-C Port

Foldable Stand

Temperature and Humidity Sensor

Preparation

You will need:

- A smartphone or tablet using Bluetooth 4.2 or later.
- The latest version of our app, downloadable via the Apple App Store or Google Play Store.
- A SwitchBot account, you can register via our app or sign in to your account directly if you already have one.



Add Hub 2 to the SwitchBot app

Open our app and sign in to your account. Tap "+" at the top right of the home page, find the Hub 2 icon and select, then follow the instructions to add your device.

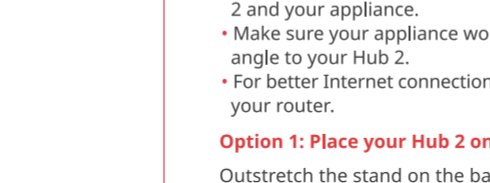
Safety Information

- Keep this product away from heat and humidity, and make sure it does not come into contact with fire or water.
- Do not operate this product with wet hands.
- This product is a precision-based electronic product, please avoid physical damage.
- Do not attempt to disassemble, repair, or modify the product.
- Do not use the product where wireless devices are not allowed.

Installation

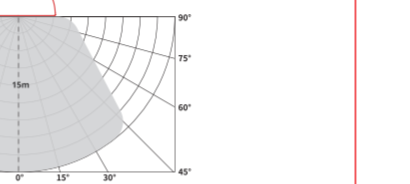
Infrared Emission Range

Test subject: SwitchBot LED Strip Light



Infrared Receiving Range

Test subject: SwitchBot Ceiling Light and its remote control



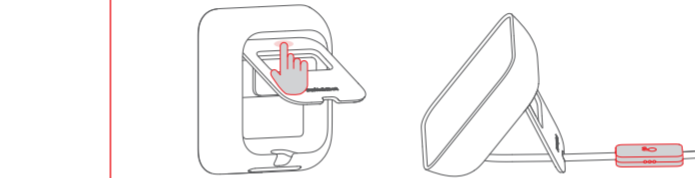
Placement Tips

- As shown above, make sure your appliance to be controlled is within Hub 2's infrared emission range.
- Since the infrared signal can be blocked by walls and other physical objects, make sure there are no obstacles between Hub 2 and your appliance.
- Make sure your appliance works well and is at an appropriate angle to your Hub 2.
- For better Internet connection strength, please place Hub 2 near your router.

Option 1: Place your Hub 2 on a horizontal surface

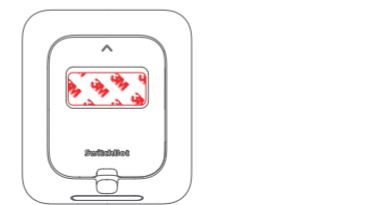
Outstretch the stand on the back of your Hub 2 and place it on a

horizontal surface like a table or a shelf. Pull straight the cable when it goes through the hole on the stand, so that the cable does not affect your Hub 2's stable standing.



Option 2: Attach your Hub 2 onto a wall with the adhesive tape

Step 1: Stick the adhesive tape to the back of your Hub 2.



Removing Hub 2

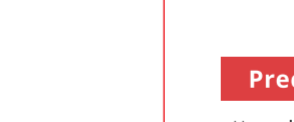
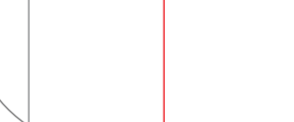
Note: Avoid grabbing and pulling your Hub 2 directly from the wall, this may cause damage to it or your wall surface.

Hold your Hub 2, turn it clockwise or counterclockwise and gradually increase force until it detaches from the wall.



Precautions

- Use only 5 V 2 A power adaptor to connect your Hub 2. Other types of adaptors may damage or affect normal functioning.
- Do not use adaptors that have no safety certifications.



Device Status Description

Adding Device

Device Status	Description
Indicator light flashes rapidly.	In pairing mode.
Indicator light flashes slowly.	Connecting to the Internet.
Indicator light stays lit up.	Working normally.
Indicator light flashes once.	Remote control added or your SwitchBot Bluetooth device is operated via the app once.

- The temperature and humidity sensor is on the cable that we provide. If you use a normal cable to connect your Hub 2, it will not show temperature and humidity readings on its display.
- Do not outstretch your Hub 2's stand with too much force, or the stand may break.
- Use only Type-C cable to connect your Hub 2 to a power supply.
- Avoid stretching or pulling the cable, this may affect the temperature and humidity sensor's data transmission.

Upgrading Firmware

Device Status	Description
Indicator light starts flashing slowly and other lights on the display go off.	Upgrading firmware.
The display lights up and indicator light flashes slowly.	Firmware upgraded successfully.
The display and indicator light both stay lit up.	Connected to the Internet.

Learning Remote Control

Device Status	Description
Indicator light lights up for 2 seconds then goes off, then flashes once after you press your remote control.	Learning remote control.
Indicator light flashes once after 10 seconds after the status above.	Operation timeout. Failed to learn remote control.

Temperature and Humidity Alerts

Device Status	Buzzer beeps continuously. Temperature and humidity readings and button lights flash constantly.
Description	Temperature or humidity reading reaches its set value.
What to Do	Press any button on your Hub 2 to lift the alert or wait for 30 seconds for the alert to go off itself.

Please visit support.switch-bot.com for detailed information.

Troubleshooting

If you have difficulty configuring Wi-Fi for your Hub 2, please scan the QR code below for solutions.
<https://support.switch-bot.com/hc/en-us/articles/8071641642135>



If you have difficulty adding remote controls to your Hub 2, please scan the QR code below for solutions.
<https://support.switch-bot.com/hc/en-us/articles/8069379964695>



If your Hub 2 shows faulty temperature or humidity readings, please scan the QR code below for solutions.
<https://support.switch-bot.com/hc/en-us/articles/9747052703895>



Resetting Factory Settings

Touch and hold the two touch buttons located on the device. After 2 seconds, the indicator light will start flashing and then turn off after another 13 seconds. Now release the buttons, the indicator light will light up then turn off. Your Hub 2 has now been reset to factory settings.

Firmware Upgrades

In order to improve user experience, we will regularly release firmware updates to introduce new functions and solve any software defects that may occur during usage. When a new firmware version is available, we will send an upgrade notification to your account via our app. When upgrading, please make sure your product is powered on and make sure your smartphone is within range to prevent interference.

Specifications

Hub 2

Model: W3202100

Color: White

Size: 80 × 70 × 23 mm (3.1 × 2.8 × 0.9 in.)

Power: 5 V = 2 A

Operating Temperature: -20 °C to 40 °C (-4 °F to 104 °F)

Operating Humidity: 0 % to 90 % RH

Network Connectivity: 802.11 b/g/n, 2.4 GHz Wi-Fi, Bluetooth

Low Energy

System Requirements: iOS 11.0+, Android OS 5.0+

Temperature and Humidity Sensor

Resolution: 0.1 °C / 0.1 °F, 1 % RH

Temperature Range: -20 °C to 80 °C (-4 °F to 176 °F)

Humidity Range: 0 to 99 % RH

Temperature Accuracy:

-20 °C to 0 °C (-4 °F to 32 °F) [±0.4 °C / 0.7 °F]

0 °C to 65 °C (32 °F to 149 °F) [±0.2 °C / 0.4 °F]

65 °C to 80 °C (149 °F to 176 °F) [±0.3 °C / 0.5 °F]

(Temperature unit can be changed in the app.)

Humidity Accuracy:

0 to 10 % RH (±3 % RH)

10 % to 90 % RH (±2 % RH)

90 % to 99 % RH (±3 % RH)

Warranty

We warrant to the original owner of the product that the product will be free from defects in materials and workmanship. Please note that this limited warranty does not cover:

1. Products submitted beyond the original limited warranty period.
2. Products on which repairs or modifying have been attempted.
3. Products subjected to falls, extreme temperatures, water, or other operating conditions outside the product specifications.
4. Damage due to natural disaster (including but not limited to lightning, flood, tornado, earthquake, or hurricane, etc.).
5. Damage due to misuse, abuse, negligence or casualty (e.g. fire).
6. Other damage that is not attributable to defects in the manufacture of product materials.
7. Products purchased from unauthorized resellers.
8. Consumable parts (including but not limited to batteries).
9. Natural wear of the product.

Contact & Support

Setup and Troubleshooting: support.switch-bot.com
Support Email: support@wondertechlabs.com

Feedback: If you have any concerns or problems when using our products, please send feedback via our app through the Profile > Feedback page.

CE/UKCA Warning

To comply with RF exposure requirements, a minimum separation distance of 20 cm must be maintained between the user's body and the device, including the antenna. Use only the supplied or an approved antenna. This device is in compliance with the essential requirements and other relevant provisions of directive 2014/53/EU. All essential radio test suites have been carried out.

CE DOC

Hereby, Woan Technology (Shenzhen) Co., Ltd. declares that the radio equipment type W3202100 is in compliance with Directive 2014/53/EU. The full text of the EU declaration of conformity is available at the following internet address: support.switch-bot.com

FCC Warning

This device complies with Part 15 of the FCC Rules. Operation is subject to the following two conditions:
(1) This device may not cause harmful interference.
(2) This device must accept any interference received, including interference that may cause undesired operation.

NOTE: This equipment has been tested and found to comply with the limits for a Class B digital device, pursuant to part 15 of the FCC Rules. These limits are designed to provide reasonable protection against harmful interference in a residential installation. This equipment generates uses and can radiate radio frequency energy and, if not installed and used in accordance with the instructions, may cause harmful interference to radio communications. However, there is no guarantee that interference will not occur in a particular installation. If this equipment does cause harmful interference to radio or television reception, which can be determined by turning the equipment off and on, the user is encouraged to try to correct the interference by one or more of the following measures:

- Reorient or relocate the receiving antenna.
- Increase the separation between the equipment and receiver.
- Connect the equipment into an outlet on a circuit different from that to which the receiver is connected.
- Consult the dealer or an experienced radio/TV technician for help.

NOTE: The manufacturer is not responsible for any radio or TV interference caused by unauthorized modifications to this equipment. Such modifications could void the user's authority to operate the equipment.

This equipment complies with FCC radiation exposure limits set forth for an uncontrolled environment. This equipment should be installed and operated with a minimum distance of 20 cm between the radiator and your body.

IC Warning

This device contains license-exempt transmitter(s)/receiver(s) that comply with Innovation, Science and Economic Development Canada's license-exempt RSS(s). Operation is subject to the following two conditions:
(1) This device may not cause interference.
(2) This device must accept any interference, including interference that may cause undesired operation of the device.

L'émetteur/récepteur exempt de licence contenu dans le présent appareil est conforme aux CNR d'Innovation, Sciences et Développement économique Canada applicables aux appareils radio exempts de licence. L'exploitation est autorisée aux deux conditions suivantes :

- (1) L'appareil ne doit pas produire de brouillage;
- (2) L'appareil doit accepter tout brouillage radioélectrique subi, même si le brouillage est susceptible d'en compromettre le fonctionnement.

IC Radiation Exposure Statement

This equipment complies with the limits of exposure to IC radiation defined for an uncontrolled environment. Cet équipement est conforme aux limites d'exposition aux radiations de la IC définies pour un environnement non contrôlé.

NCC Warning

取得審驗證明之低功率射頻器材，非經核准，公司、商號或使用者均不得擅自變更頻率、加大功率或變更原設計之特性及功能。

低功率射頻器材之使用不得影響飛航安全及干擾合法通信；經發現有干擾現象時，應立即停用，並改善至無干擾時方得繼續使用。前述合法通信，指依電信管理法規定作業之無線電通信。低功率射頻器材須忍受合法通信或工業、科學及醫療用電波輻射性電機設備之干擾。

NCC Warning

取得審驗證明之低功率射頻器材，非經核准，公司、商號或使用者均不得擅自變更頻率、加大功率或變更原設計之特性及功能。

低功率射頻器材之使用不得影響飛航安全及干擾合法通信；經發現有干擾現象時，應立即停用，並改善至無干擾時方得繼續使用。前述合法通信，指依電信管理法規定作業之無線電通信。低功率射頻器材須忍受合法通信或工業、科學及醫療用電波輻射性電機設備之干擾。