

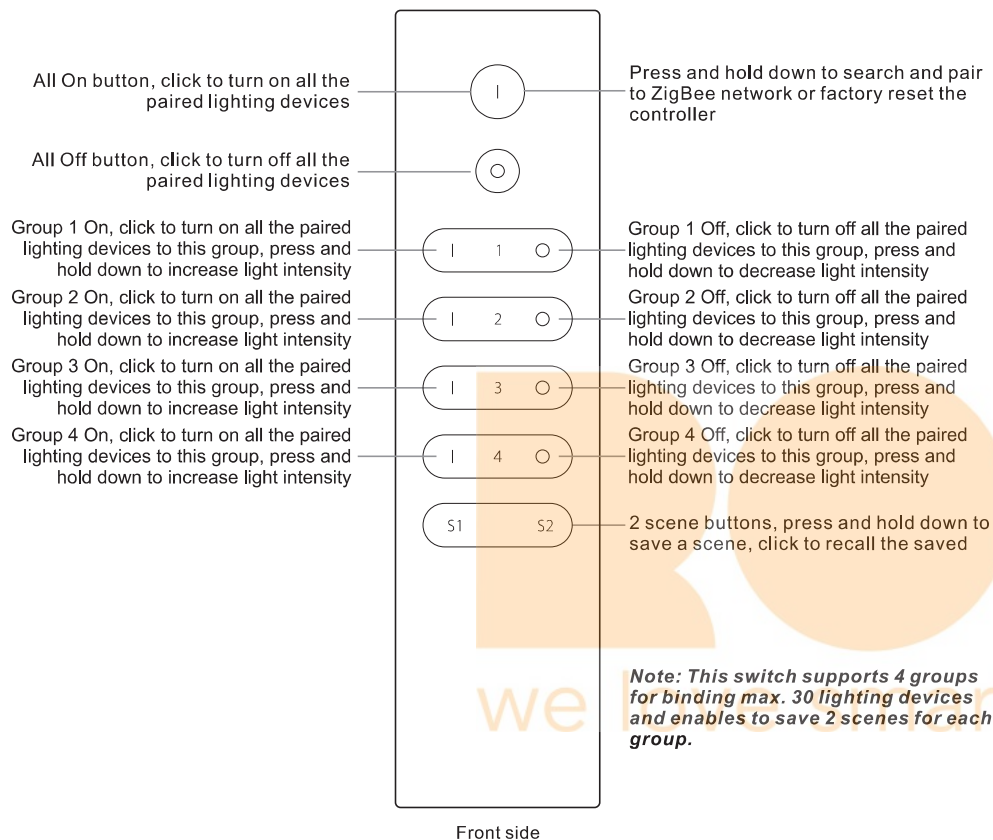
# ZigBee Wireless Dimmer Switch

70100007



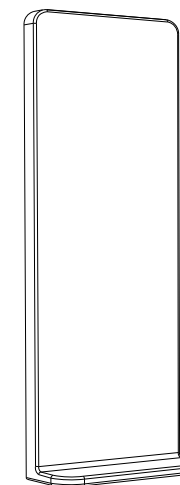
**Important:** Read All Instructions Prior to Installation

## Function introduction



## Product Data

Protocol	ZigBee 3.0
Operation Voltage	3VDC (CR2032)
Transmission Frequency	2.4GHz
Transmission Range (free field)	30m
Protection Type	IP20
Dimming Range	0.1%-100%
Dimension	150x38.6x12mm
Protection Grade	IP20



Magnetic Bracket

- ZigBee dimmer switch based on ZigBee 3.0
- Enables to pair ZigBee lighting devices via touchlink commissioning without coordinator
- Supports find and bind mode to pair with ZigBee lighting devices in the same network
- Supports 4 groups for binding max. 30 lighting devices
- 2.4 GHz global operation
- Long battery life mesh technology
- Transmission range up to 30m
- Compatible with universal ZigBee Gateway products
- Compatible with universal single color ZigBee lighting devices

## Safety & Warnings

- This device contains a button lithium battery that shall be stored and disposed properly.
- DO NOT expose the device to moisture.

## Quick Start (Simplified Operations Compared to Standard Operations in "Operation" part)

**Network pairing mode:** Short press both keys together 3 times quickly to set the remote into network pairing mode directly if it has not been added to a network.

**Touchlink + Add Group 2:** Press and hold down both for 3 seconds to start touchlink and link light device to group 2.

**Touchlink + Add Group 4:** Press and hold down both for 3 seconds to start touchlink and link light device to group 4.

**Factory reset:** Short press both keys together 3 times quickly to factory reset the remote directly if it has already been added to a network.

**Touchlink + Add Group 1:** Press and hold down both keys for 3 seconds to start touchlink and link light device to group 1.

**Touchlink + Add Group 3:** Press and hold down both keys for 3 seconds to start touchlink and link light device to group 3.



**Note:** Before the first use, please remove the protective film on the battery.

Back side

## ZigBee Clusters Supported by This Remote Are As Follows:

### Input clusters:

- Basic
- Power Configuration
- Identify
- Diagnostics

### Output clusters:

- Identify
- Scenes
- Group
- On/off
- Level control
- Ota

## Operation

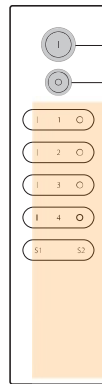
1. This ZigBee Dim remote is a wireless transmitter that communicates with a variety of ZigBee compatible systems. This transmitter sends wireless radio signals that are used to remotely control a compatible system.

2. This ZigBee remote supports 4 groups for binding max. 30 lighting devices and enables to control single color ZigBee lighting devices.

### 3. Zigbee Network Pairing through Coordinator or Hub (Added to a Zigbee Network)

**Step 1:** Remove the remote from previous zigbee network if it has already been added to it, otherwise pairing will fail. Please refer to the part "Factory Reset Manually".

**Step 2:** From your zigbee controller or hub interface, choose to add device or accessory and enter Pairing mode as instructed by the controller.



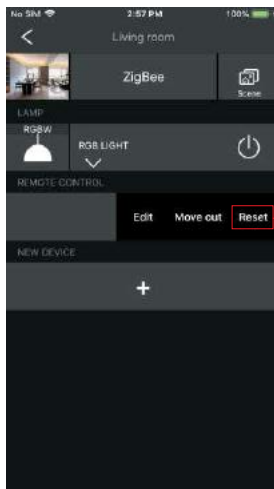
**Step 3:** Press and hold down until LED indicator turns on.

**Step 4:** Immediately short press to search nearby network, indicator flashes every 1 second, 20 seconds timeout if there is no network. Indicator will then blink 5 times quickly for successful pairing.

**Note:** 1) After pairing successfully, the remote information will appear on the controller or hub interface.

2) No remote information will appear on the hub interface if pairing to Philips Hue Bridge.

### 4. Removed from a Zigbee Network through Coordinator or Hub Interface



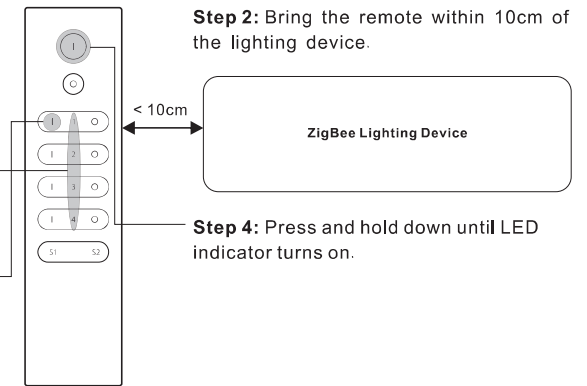
From your ZigBee controller or hub interface, choose to delete or reset the remote as instructed, indicator flashes 3 times quickly to indicate successful removing.

### 5. TouchLink to a Zigbee Lighting Device

**Step 1:** Set the zigbee lighting device to start TouchLink commissioning, please refer to its manual to learn how.

**Step 3:** Short press ON button I of group 1/2/3/4 to choose a group that you would like to pair the device to.

**Step 5:** Short press to start TouchLink pairing procedure of the remote. LED indicator will flash fast for 3s to start TouchLink and then flash 6 times slowly to indicate successful pairing to the device.



**Step 2:** Bring the remote within 10cm of the lighting device.

**Step 4:** Press and hold down until LED indicator turns on.

**Note:** 1) Directly TouchLink (both not added to a ZigBee network), each remote can link with 30 devices.

2) TouchLink after both added to a ZigBee network, each remote can link with max. 30 devices.

3) For Hue Bridge & Amazon Echo Plus, add remote and device to network first then TouchLink.

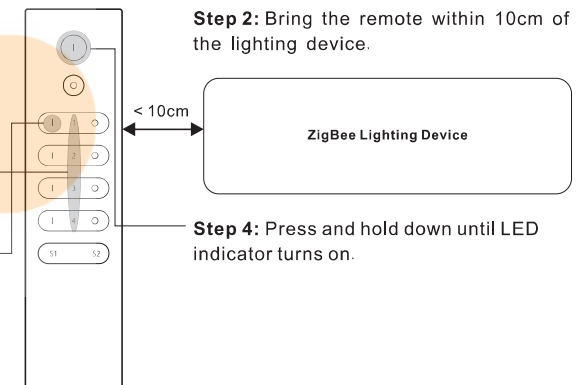
4) After TouchLink, the remote can control the linked lighting devices.

### 6. Remove a Touchlink Paired ZigBee Lighting Device

**Step 1:** Set the Touchlink paired zigbee device to start TouchLink commissioning, please refer to its manual to learn how.

**Step 3:** Short press ON button I of group 1/2/3/4 to choose a group that the device was linked to.

**Step 5:** Immediately short press twice to start TouchLink removing of the remote. LED indicator flashes fast for 3S, then flash 6 times slowly to indicate successful removing.



**Step 2:** Bring the remote within 10cm of the lighting device.

**Step 4:** Press and hold down until LED indicator turns on.

### 7. Factory Reset Manually

**Step 1:** Press and hold down until LED indicator turns on.

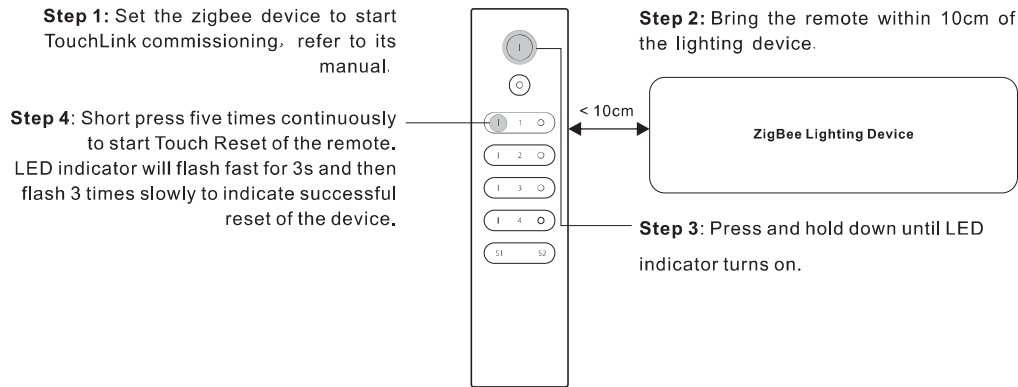
**Step 2:** Immediately short press 5 times continuously, indicator flashes 3 times quickly to indicate successful reset.

**Note:** All configuration parameters will be reset after the remote is reset or removed from the network.



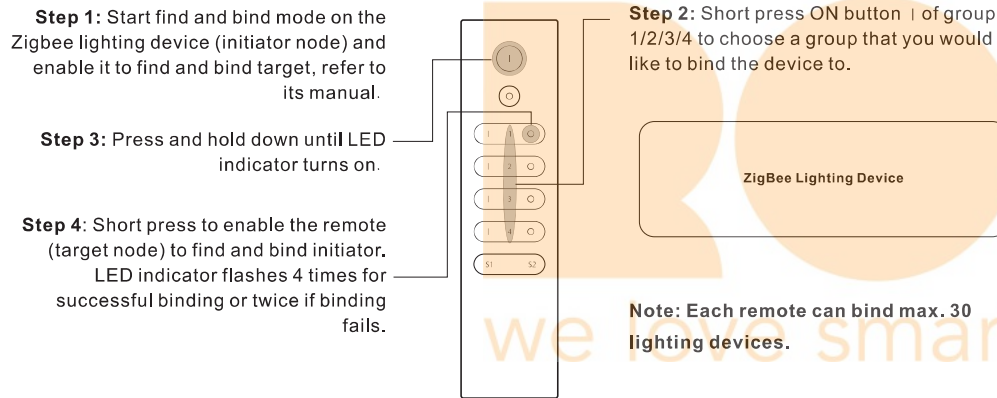
## 8. Factory Reset a Lighting Device (Touch Reset)

**Note:** the device shall be added to a network, the remote added to the same one or not added to any network.

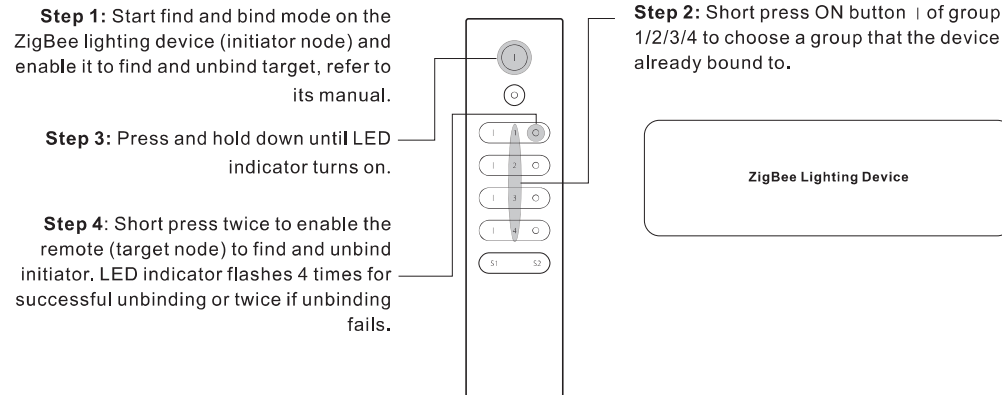


## 9. Find and Bind a Zigbee Lighting Device

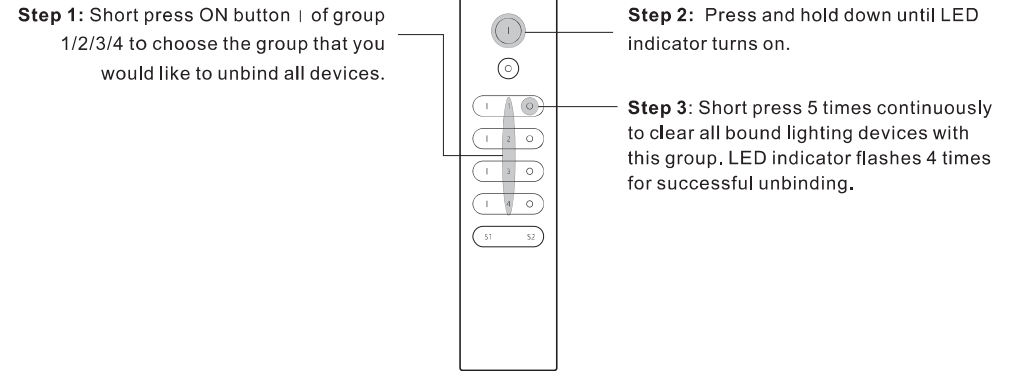
**Note:** Make sure the device and remote already added to the same zigbee network.



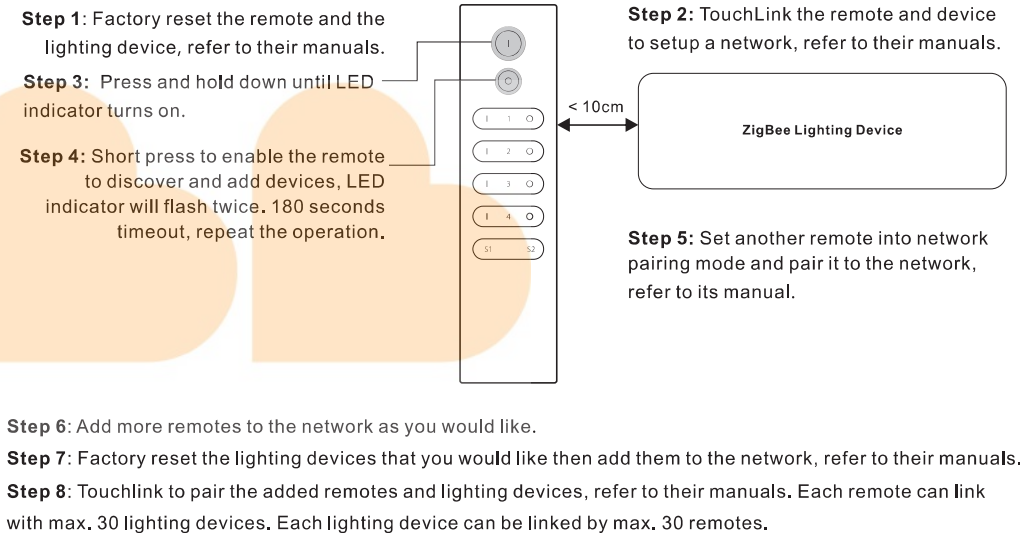
## 10. Find and Unbind a Zigbee Lighting Device



## 11. Clear All Find and Bind Mode Paired Lighting Devices of a Group

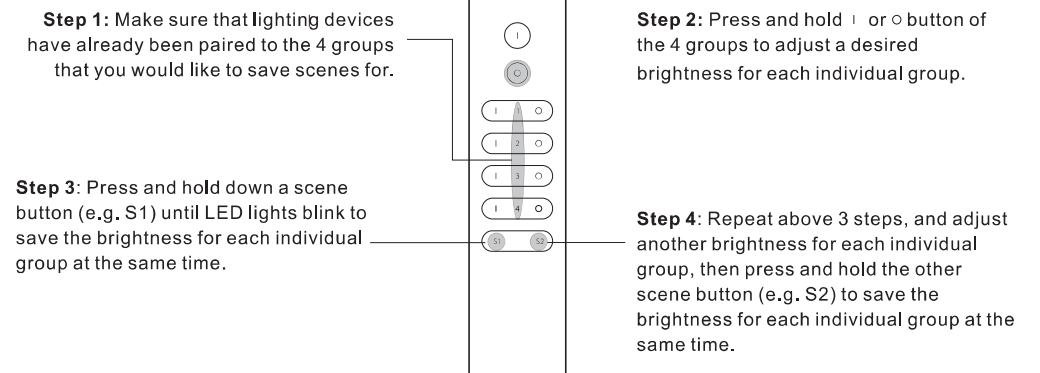


## 12. Setup a Network & Add Devices to the Network (No Coordinator or Hub Required)



## 13. How to Save and Recall Scenes

### 1) Save Scenes



## 2) Recall the Saved Scenes

**Step 1:** Short press button S1/S2 to recall a saved scene for each individual group at the same time.

## 14. OTA

The remote supports firmware updating through OTA, and will acquire new firmware from zigbee controller or hub every 10 minutes automatically.

## 15. How to Check Whether the Remote Belongs to a Network or not

Activate the remote by clicking All On/Off button (indicator on), then short press any other buttons except group buttons, indicator blinking 3 times means the remote does not belong to any network, blinking once or twice means it has already been added to a network.

## 16. Battery Power Monitor Function

**The remote will report battery power value to the coordinator under following situations:**

- When powered on.
- When short pressing both | and ○ buttons of group 1 simultaneously.
- When operating the switch to send data packets (over 4 hours since last operation).
- When added to the network by a coordinator.

