

## Motion Sensor 2 PET - FRIZMOSZB-153

Modified on: Tue, 20 Aug, 2024 at 9:30 AM

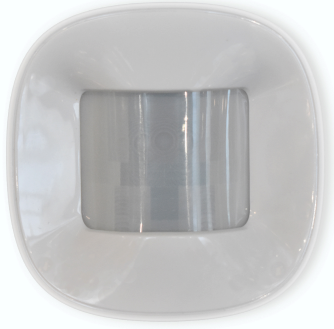
Für eine deutsche Übersetzung [Klicken Sie hier](https://z-wave.freshdesk.com/support/solutions/articles/80001150511-motion-sensor-2-pet-frizmoszb-153-de) (<https://z-wave.freshdesk.com/support/solutions/articles/80001150511-motion-sensor-2-pet-frizmoszb-153-de>).

---

For more information about the product follow the respective links:

- [Manufacturer manual](https://help.frient.com/en/frient/motion-sensor-2-pet-6bf9ad) (https://help.frient.com/en/frient/motion-sensor-2-pet-6bf9ad)
-

front



## Precautions

- When mounting with tape, make sure the surfaces are clean and dry.
- When mounting with tape, the room temperature should ideally be between 21° C and 38° C and a minimum 16° C.
- Avoid mounting with tape on rough, porous, or fibered materials such as wood or cement, as they reduce the tape bond.

## Join to Network

1. When batteries are inserted, Motion Sensor 2 will automatically start searching (up to 15 minutes) for a Zigbee network to join.
2. Make sure that the Zigbee network is open for joining devices and will accept the motion sensor.
3. While the sensor is searching for a Zigbee network to join, the LED flashes red.
4. When the sensor is connected to a network, it will stop flashing.

## Placement

- Place the sensor indoors at a temperature between 16-50°C.
- Its angle of detection from above, the sides, and below must be 45°.
- Place the motion sensor in a location with a clear view of the monitored area and the windows.
- The distance from the sensor to a fireplace or a stove must be at least four meters.
- Motion Sensor 2 must be reachable for battery testing and maintenance.
- Place the sensor free of curtains and other obstacles.
- Avoid placing the motion sensor close to a heating/cooling source.
- Avoid placing the motion sensor in direct sunlight or bright light.

## Mounting

There are several mounting options for Motion Sensor 2. You can mount it flat on a ceiling or wall, using screws, adhesive tape, or a magnet. If you have a sensor with a corner bracket included, you can mount the bracket in corners or on the ceiling, using screws or adhesive tape. Afterward, you can attach the sensor to the bracket by using the magnet inside the device or the screws. If you have a stand included, you can also place the sensor on the stand.

### MOUNTING FLAT ON CEILING OR WALL

1. Open the casing, and use the sensor part with oval holes to mark the screw holes on the ceiling or the wall.
2. Mount the sensor on the wall or the ceiling by installing one screw from the bag marked “A” through each oval hole.  
Using screws for mounting is the most secure mounting option, as it prevents sudden, unwanted removal.
3. Insert batteries and make sure that the battery polarity is correct (+/-).
4. Close the casing of the sensor

### MOUNTING WITH MAGNET

If your sensor includes a corner bracket, you can mount the sensor flat on the wall or ceiling, using the magnet from the bracket.

1. Unscrew the small magnet from the bracket.
2. Screw the magnet on a ceiling or a wall
3. Attach the sensor to the magnet.

### **CORNER OR CEILING MOUNTING WITH CORNER BRACKET**

1. If you have a sensor with a corner bracket included, you can mount the sensor with this bracket in a corner or on the ceiling.
2. Use the corner bracket to mark the screw holes on the two walls in the corner of the room or on the ceiling.
3. Use the two screws in the bag marked "A" to install the bracket in the marked place. Using screws for mounting is the most secure mounting option, as it prevents unwanted removal, e.g. by intruders.
4. Attach the sensor to the corner bracket, which includes a magnet.

### **MOUNTING THE SENSOR ON THE CORNER BRACKET WITH THE SCREWS**

If you are using the sensor for security purposes, we recommend using screws to mount the sensor on the bracket for a more secure fastening.

1. Open the casing of the sensor.
2. Place the part with oval holes against the already mounted bracket
3. Take two screws from the bag marked "B". Mount one screw through each oval hole and into two holes on the corner bracket.
4. Insert batteries and make sure that the battery polarity is correct (+/-).
5. Close the casing of the sensor

### **STAND**

1. If you have a sensor with a plastic stand included, you can insert the stand in the opening on the back of the sensor as shown on the drawing.
2. Place the standing sensor on the shelf or on a desk.

## **Modes**

- **SEARCHING GATEWAY MODE** - Red LED light is flashing every second (up to 15 minutes).
- **LOW BATTERY** - The device flashes red twice a minute when the battery charge is low.
- **ALARM TESTING MODE** - Motion Sensor will automatically flash green every time movement is detected by the Intruder Alarm System, no matter if the alarm system is activated or deactivated. The green flashes can help you determine if the placement of the sensor is suitable for alarm purposes.

## **Reset the Device**

Resetting is needed if you want to connect your motion sensor to another gateway, or if you need to perform a factory reset to eliminate abnormal behavior

1. Detach the sensor from the bracket and/or open the casing.
2. Check that the batteries are inserted correctly.
3. Press and hold the round menu button inside the device
4. While you are holding the button down, the LED first flashes once, then two times in a row, and finally numerous times in a row.
5. Release the button while the LED is flashing numerous times in a row.
6. After you release the button, the LED shows one long flash, and the reset is completed.

## **Fault finding & cleaning**

- In case of a bad or weak signal, change the location of the motion sensor. Otherwise, you can relocate your gateway or strengthen the signal with a smart plug.
- If the search for a gateway has timed out, a short press on the button will restart it.

## Battery replacement

The device will blink twice every minute when the battery is low.

**CAUTION:** *RISK OF EXPLOSION IF BATTERIES ARE REPLACED BY AN INCORRECT TYPE. DISPOSE OF THE BATTERIES IN ACCORDANCE WITH INSTRUCTIONS.*

**CAUTION:** When removing cover for battery change - Electrostatic Discharge (ESD) can harm electronic components inside

1. To replace the battery, detach the motion sensor from the bracket and/or open the casing.
2. Replace the battery respecting the polarities.
3. Close the casing of the sensor.

## Specifications

- **Dimensions:** (W x D x H) 70 x 70 x 37 mm
- **Color:** White
- **IP class:** IP20
- **Battery:** 2x AA LR6
- **Battery life:** 3 years, reporting every 2 minutes
- **Operation temperature:** 0 to +50°C
- **Relative humidity:** 5% to 85% non-condensing
- **Wireless protocol:** Zigbee 3.0
- **Sensitivity range:** 9m
- **View angle:** 45° up/down, left/right
- **Temperature sensor range:** 0 to +50°C
- **Resolution:** 0.1°C (accuracy  $\pm$  0.5°C)