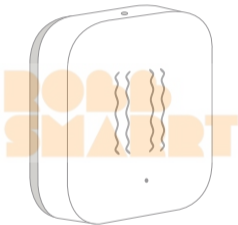


Aqara



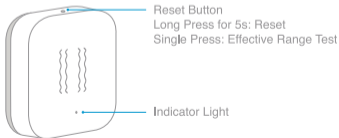
Vibration Sensor

Vibration Sensor Quick Start Guide

Product Introduction

Aqara Vibration Sensor is embedded with a high precision acceleration sensor and it detects the vibration and movement of objects. It communicates with the Hub via Zigbee protocol. It also works with other smart accessories to set various smart scenes, such as, local and remote alarm when it detects glass breaks.

- * A hub is required.
- * Aqara Hub is required to enable Aqara Vibration Sensor to work with HomeKit technology. See www.aqara.com for more details.
- * This product is for indoor use only.



Quick Setup

1. Please add the Hub to the app according to the Hub Quick Start Guide.
2. Please open the app, tap “Home” and then tap “+” in the top right corner to enter “Add Device (Accessory)” page. Select “Vibration Sensor”, and add it according to instructions.

* If the connection fails, please move the accessory closer to the Hub and try again.

Installation

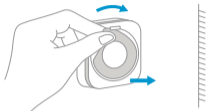
Effective Range Test: Single press the reset button on the accessory at your desired position. If the Hub makes voice prompts, it indicates that the accessory can communicate effectively with the Hub.

* Avoid metal surface to maximize signal strength.

Option 1: Place it directly in the desired position.



Option 2: Remove the protective film, and stick it to the desired position.



English

* Keep the surface clean and dry.

Specifications

Model: DJT11LM

Dimensions: 36 × 36 × 9 mm (1.42 × 1.42 × 0.35 in.)

Wireless Protocol: Zigbee

Battery: CR2032

Operating Temperature: -10° – +50° C

Operating Humidity: 0 – 95% RH, no condensation

Online Customer Service: www.aqara.com/support

Email: support@aqara.com

Manufacturer: Lumi United Technology Co., Ltd.

Address: 8th Floor, JinQi Wisdom Valley, No.1 Tangling Road, Liuxian Ave, Taoyuan Residential District, Nanshan District, Shenzhen, China.

The logo for ROBB SMART is displayed in a light orange color. The word "ROBB" is on the top line, and "SMART" is on the bottom line. The letters are bold and blocky. The 'O' in "ROBB" and the 'A' in "SMART" are stylized with rounded shapes. The 'B's in "ROBB" have a heart-like shape in the middle. The 'M' in "SMART" is a simple triangle shape.